



## SAILING INSTRUCTIONS

*[DP] denotes a rule for which the penalty is at the discretion of the International Jury and may be less than disqualification.*

*[NP] denotes that a breach of this rule will not be grounds for a protest by a board.*

*[SP] denotes a rule for which a standard penalty may be applied by the race committee without a hearing*

### 1. RULES

- 1.1. The regatta will be governed by the rules as defined in the Racing Rules of Sailing – Windsurfing Competition Rules (**WCR**) and the Class Championship Rules (**CCR**).
- 1.2. No national authority prescription will apply.
- 1.3. If there is a conflict between the Notice of Race and these Sailing Instructions the Sailing Instructions will take precedence. **This changes WCR 63.7.**
- 1.4. If there is a conflict between languages, the English text will take precedence.
- 1.5. **[DP] [NP]** Event lycras will be provided and shall be worn outside any other clothing or equipment at all times when afloat and during media interviews ashore. Event lycras shall not be cut, trimmed, defaced, or altered in any way.
- 1.6. **[DP] [NP]** Leaders lycras – details shall be published daily on the Official Notice Board.
- 1.7. **[DP] [NP]** Competitors may be required to carry on their boards cameras or positioning equipment as specified by the organising authority.

### 2. NOTICES TO COMPETITORS

- 2.1. Notices to the competitors will be posted on the Official Notice Board located in the Race Office Tent.

### 3. CHANGES TO SAILING INSTRUCTIONS

- 3.1. Any change to the Sailing Instructions will be posted not less than 90 minutes before the scheduled warning signal of the race it takes effect, except that any change to the schedule of the first race of the day will be posted before 20:00 on the day before it will take effect.

### 4. SIGNALS MADE ASHORE

- 4.1. Signals made ashore will be displayed at the Official Flag Poles located next to the Race Office Tent.
- 4.2. When a signal is displayed over a Class/Division/Group flag it applies to that Class/Division/Group only.
- 4.3. **[DP] [NP]** When the Class/Division/Group flag is displayed ashore competitors can go afloat. The warning signal will be in not less than 30 minutes. **If the Class/Division/Group flag is NOT displayed competitors SHALL NOT go afloat.**

- 4.4. [DP] [NP] When **Flag Y** is displayed ashore WCR 40 applies at all times while afloat. **This changes the WCR Part 4 preamble.**

## 5. SCHEDULE OF RACES

- 5.1. The daily race schedule and the scheduled time of the Warning signal for the first race will be posted on the Official Notice board.
- 5.2. There shall be a maximum 3 races per day, and a maximum of 12 races in the championship, for each class/division. **This changes NoR 6.4.**
- 5.3. To alert boards that a race or sequence of races will begin soon, an orange flag will be displayed with one sound signal for at least five minutes before a warning signal is displayed.
- 5.4. Three (3) races may be sailed "back to back". **This changes CCR 3.4.2.**
- 5.5. A *marathon* (long distance) race may be scheduled, and shall count as one race in the championship series. Details shall be published on the Official Notice Board.
- 5.6. On the last day of the regatta no warning signal will be made after 17:00.

## 6. RACING FORMAT group racing

- 6.1. In the Techno 293 Class, Group racing may apply as specified in the Championship rules #9.2.
- 6.2. The qualifying series (First Round) shall be a maximum of 6 races and a minimum of 4 races. If fewer than 4 races have been completed by the groups at the end of the 3<sup>rd</sup> day the qualifying series shall be extended to the 4<sup>th</sup> day and 5<sup>th</sup> day if necessary. **This changes CCR 9.4**
- 6.3. Groups in the First Round shall be reassigned at the end of each day if all groups in a Division have completed an equal number of races. They shall be intermixed according their current (overall) standing in the Division.
- 6.4. For the first day competitors shall be assigned to groups Yellow or Blue according to a seeding list defined as the competitors list in National letter and sail number order.
- 6.5. At the end of the First Round an overall standing shall be established. If racing in the Final Round is not possible this standing shall count as the official result.
- 6.6. The Final Round shall be raced in Gold and Silver Groups. The Gold group shall consist of the top half of the competitors in the overall standing at the end of the first round, plus one in case of an odd number of entries. In case of ties at the breakpoint those competitors so tied shall sail in the Gold group
- 6.7. A competitors group standing shall be the sum of his/her scores excluding their worst score(s) in accordance with WCR Appendix A as amended by CCR 13.5. Silver group competitors shall be ranked in the division standing after those in the Gold group.
- 6.8. When 4 races have been completed the worst score shall be excluded; if 11 races or more are completed the worst score from the First Round and the worst score from the Final Round shall be excluded.

## 7. FLAGS, EVENT LYCRAS & RIBBONS

- 7.1. The Class/Division/Group flags, event lycras & ribbons shall be:

Class/Division	Group	Flag	Lycra	Ribbon
T293/Junior boy		Green with T293 logo	Orange	x
T293/Junior girl		Pink with T293 logo	Orange	Yellow
T293/Youth boy	Yellow-Gold	Yellow with T293 logo	Blue	x
	Blue-Silver	Blue with T293 logo	Blue	Blue
T293/Youth girl		White with T293 logo	Blue	x
T293 Plus Man		Red with T293 logo	Orange	x
T293 Plus Woman		Red with T293 logo	Orange	yellow

## 8. RACING AREAS

- 8.1. SI's Appendix C shows the location of racing areas.
- 8.2. There shall be 2 racing areas:  
A - ALPHA      B - BRAVO

- 8.3. The racing area is defined in SI's Appendix A as an area extending 75 metre beyond the course including the starting line, the finishing line and their extensions, in which a board normally sails while racing.
- 8.4. [DP] Boards not racing shall avoid the racing area.
- 8.5. The allocation to a Racing Area may vary on a daily basis for each Class /Division.

**9. COURSES**

- 9.1. The diagram in SI's Appendix B shows the courses, including the approximate angles between legs, the order in which the marks are to be passed, and the side on which each mark is to be left.
- 9.2. The course to be sailed will be displayed on a white flag on the starting boat not later than 1 minute before the warning signal.
- 9.3. If a *marathon* race is scheduled the details of the course, including a description of the marks, shall be published on the Official Notice Board.

**10. MARKS**

- 10.1. The marks will be:

Mark 1-4	Cylindrical buoys-the colour as class/division/group event lycra
Starting marks	The Race Committee start line boats
Finishing marks	The Race Committee finishing boat and a yellow cylindrical buoy

**11. [DP] [NP] FORBIDDEN AREAS & OBSTRUCTIONS**

- 11.1 Boards shall not be launched or recovered from the beach south of the Official Flag Pole, as illustrated on the official notice board.

**12. THE START**

- 12.1. Races will be started according to WCR 26.
- 12.2. The starting line will be between staffs displaying orange flags on the starting marks.
- 12.3. A board starting later than 4 minutes after her warning signal will be scored Did Not Start (DNS) without a hearing. **This changes WCR A4 and A5.**
- 12.4. If flag I has been displayed, and any part of a boat's hull, crew or equipment is in the triangle formed by the ends of the starting line and the first *mark* during the last minute before her starting signal, she shall thereafter sail from the course side across an extension to the pre-start side before *starting*. **This changes WCR 30.1.**
- 12.5. When an Individual Recall has been signalled or a board breaks rule 30.3, the Race Committee will display her sail number on the Race Committee Signal Boat before the first competitor has finished the race. Failure to display the sail numbers(s) will not be grounds for redress. **This changes WCR 62.1(a).**

**13. THE FINISH**

- 13.1. The finishing line will be between staffs displaying a Blue flag on the boat and on the yellow buoy.

**14. TIME LIMITS AND TARGET TIMES**

- 14.1. The target time for the first finisher is 20 TO 25 minutes. **This changes CCR 3.2.e.**
- 14.2. The time limit for the first board in each race to reach the first mark is 15 minutes.
- 14.3. The time limit for the first board to finish a race is 45 minutes.
- 14.4. If the time limits in SI's #14.2 and #14.3 are exceeded the race shall be abandoned.
- 14.5. Boards failing to finish within 20 minutes after the first finisher in their respective division or group shall be scored DNF except those who are scored DSQ, BFD, OCS, RET, RDG or DNE. **This changes WCR 35, A4 and A5.**

## **15. PROTEST AND REQUESTS FOR REDRESS**

- 15.1. Protest forms are available in the Race Office Tent. Protest and request for redress shall be delivered at the Race Office information counter within the Protest time limit.
- 15.2. Special attention will be for WCR 61.1 (a) "...She shall inform the Race Committee of her intention to protest as soon as practicable after she *finishes* or retires"
- 15.3. **[DP]** **[NP]** Boards retiring from racing, after finishing shall complete a Retirement Declaration Form at the Race Office before the protest time limit.
- 15.4. **[DP]** **[NP]** Boards taking a voluntary penalty shall complete the Penalty Acknowledgment Form at the Race Office before the end of the protest time limit.
- 15.5. For each Class/Division/Group the Protest Time Limit is 60 minutes after the last board of her group has finished the last race of the day or the Race Committee signals "AP over A" whichever is later.
- 15.6. Notices will be posted no later than 15 minutes after the protest time limit to inform competitors of hearings in which they are parties or named as a witness. Hearings will be held in the protest room located at the back of the gym.
- 15.7. Notices of protest by the Race Committee or Jury will be posted on the Official Notice Board to inform boards under rule 61.1(b).
- 15.8. Breaches of WCR 77 and rules in the Sailing Instructions marked **[NP]** will not be grounds for a protest by a board. **This changes WCR 60.1(a)**. Penalties for breaches marked **[DP]** are at the discretion of the protest committee and may be less than disqualification if the protest committee so decides.
- 15.9. On the last day of the regatta a request for reopening a hearing shall be delivered
  - 15.9.1. Within protest limit if the requesting party was informed of the decision on the previous day.
  - 15.9.2. No later than 30 minutes after the requesting party was informed of the decision on that day.**This changes WCR 66.**
- 15.10. On the last day of the regatta a request for redress based on a protest committee decision shall be delivered no later than 30 minutes after the decision was posted. **This changes WCR 62.2.**
- 15.11. Decisions of the international jury will be final as provided in WCR 70.5

## **16. ARBITRATION SYSTEM – This changes CCR 11.**

- 16.1. Rule Changes:
  - 16.1.1. Add new rule WCR A4.3: "A board that may have broken a rule of Part 2 while racing may take a penalty after she has finished or retired and prior to the start of a protest hearing involving the incident. Her penalty shall be a Scoring Penalty of 30% calculated as described in rule 44.3(c), but not more than half of the difference between the board's score prior to applying the penalty and the score for DNF, unless the sailing instructions state a different penalty. However, if she caused injury or serious damage or gained a significant advantage in the race or series by her breach, her penalty shall be to retire."
  - 16.1.2. Rule WCR 63.1 is changed to add: "Appointed arbitrators may hear a protest and take a decision, or may allow the protest to be withdrawn."
- 16.2. An arbitration meeting will be held prior to a protest hearing for each incident resulting in a protest involving a rule of Part 2, unless the arbitrators deem the incident inappropriate for arbitration. Both parties will meet with the arbitrators. If both parties to a protest are not represented, the arbitration meeting shall not be held. No witnesses will be permitted.
- 16.3. After hearing the testimony, the arbitrators will offer one of the following opinions:
  - 16.3.1. The arbitrators would find the protest to be invalid.  
The arbitrators will allow the protestor to withdraw the protest.
  - 16.3.2. The arbitrators would find that no board broke a rule. The arbitrator will allow the protestor to withdraw the protest.
  - 16.3.3. The arbitrators would find that one or more boards represented in the arbitration meeting broke a rule of Part 2. The arbitrators would offer each of those boards the option to accept a Scoring Penalty, or to retire. The arbitrators will then give the protestor an opinion about whether the protest committee would be likely to assign any additional penalties. The arbitrators may award redress according to rules 62.1 and 64.2. The arbitrators will allow the protestor to withdraw the protest.

- 16.3.4. A protest hearing is appropriate.
- 16.4. The protest committee will schedule a protest hearing for any protests that are not withdrawn. Any board that accepted a penalty in accordance with SI 16.1.1 will not be penalized further as a result of the protest hearing unless the protest committee concludes that the boat caused injury or serious damage, gained a significant advantage in the race or series, or broke a rule other than a rule of Part 2.
- 16.5. If a protest is withdrawn, no protest hearing will be held and the protest cannot be the subject of a request for redress or appeal.

## **17. SCORING**

- 17.1. Scoring will be according WCR appendix A as amended by **CCR 13.5** for discards.
- 17.2. Three races are required to validate the event for each class.
- 17.3. To request correction of an alleged error in the posted races or series results, a board shall complete a Scoring Enquiry Form available at the Race Office. The Scoring Enquiry Form shall be delivered not later than 19:00 of the day involved except if the results list is published after 18:30 in that case the form shall be delivered not later than 9:00 of the day after.
- 17.4. The T293 Plus men and women shall be scored separately as separate divisions.

## **18. [DP] [NP] SAFETY REGULATIONS**

- 18.1. The Safety System applies at all times during the regatta.
  - 18.1.1 When going out to race each competitor intending to race shall personally sign out against her name/sail number.
  - 18.1.2 On returning ashore each competitor shall personally sign in to confirm that she has returned to shore, either within 30 minutes of the end of the time limit of that race, or, in the case of back to back races, of the last race of that Class/Division/Group for the day or, within 30 minutes after being instructed to go ashore by the Race Committee.
  - 18.1.3 Sign-Out and Sign-In Lists will be provided by the Race Committee at desks in front of the race office.
- 18.2. Competitors leaving the race before finishing shall inform the Race committee (RC boats or Rescue boats) as soon as possible. If this is not possible the competitor shall inform the Race Office.
- 18.3. **[SP]** Penalties:
  - 18.3.1. Failure to sign-out will result in a 5 points penalty without a hearing for the first race sailed after the failure.
  - 18.3.2. Failure to sign-in will result in a 5 points penalty without a hearing for the last race sailed - before the failure.
  - 18.3.3. A board shall not score worse than DSQ

## **19. [DP] REPLACEMENT OF EQUIPMENT**

- 19.1. Substitution of damaged or lost equipment will not be allowed unless authorized by the Race Committee. Request for substitution shall be made in writing at the first reasonable opportunity. Forms for replacement are available at the Race Office.

## **20. [DP] EQUIPMENT CHANGES AND MEASUREMENT CHECKS**

- 20.1. A board or equipment may be inspected at any time for compliance with the class Rules and Sailing Instructions. On the water, a board can be instructed by the Race Committee to proceed immediately to a designated area for inspection.
- 20.2. When changing to a rig with a different size sail, the crew must obtain the new rig and return the old rig at the same time to the equipment storage area. The equipment storage area shall be ashore in the vicinity of the launching area unless otherwise stated in the sailing instructions.

## **21. [DP] [NP] IDENTIFICATION**

- 21.1. Boards shall tie the coloured ribbon provided by the Race Committee at the batten retaining strap of the second batten down from the head of the sail. The coloured ribbon will be distributed and collected, daily, at the Sign-OUT /Sign-IN desks.

## **22. OFFICIAL BOATS**

- 22.1. Official boats will be marked as follows:  
Race Committee boats - White Flag with flag "RC" in black letters  
Jury boats - White Flag with "JURY" in black letters  
Media boats - White flag with "MEDIA" in black letters.

## **23. [DP] [NP] SUPPORT BOATS**

- 23.1. All team support boats may display the national 3 letter code in black (min height 120 mm) on a white background which will be clearly visible on the support boat.
- 23.2. Coach and support boats shall stay outside areas where boards are racing from the time of the preparatory signal for the first fleet to start until all boards have finished or retired or the race committee signals a postponement or abandonment except to assist a crew in distress or at request of the Race Committee.
- 23.3. Support boats shall comply with any reasonable request from a race official.
- 23.4. When **Flag R** is displayed on the Race Committee Signal Boat with repetitive sound signals all coaches and other support boats shall monitor **VHF channel** 72 or 77 depending on a racing area or go to the Race Committee Signal Boat to assist in Search and Rescue operations.
- 23.5. A personal flotation device shall be worn by all support boat personal at all time while afloat.
- 23.6. Support boat drivers shall use the kill cord in the recommended manner.
- 23.7. All coach boats shall carry a tow rope (minimum 15 metres long and 8 mm thick)
- 23.8. An alleged breach of any of the regulations in SI #23 may be referred to the Race Committee and Jury. The Race Committee may instruct the organizing authority to withdraw accreditation and access rights to the regatta venue and the course areas from the offending party without the option of replacement during the regatta. **This changes Techno CCR 16.4.**

## **24. [DP] [NP] TRASH DISPOSAL**

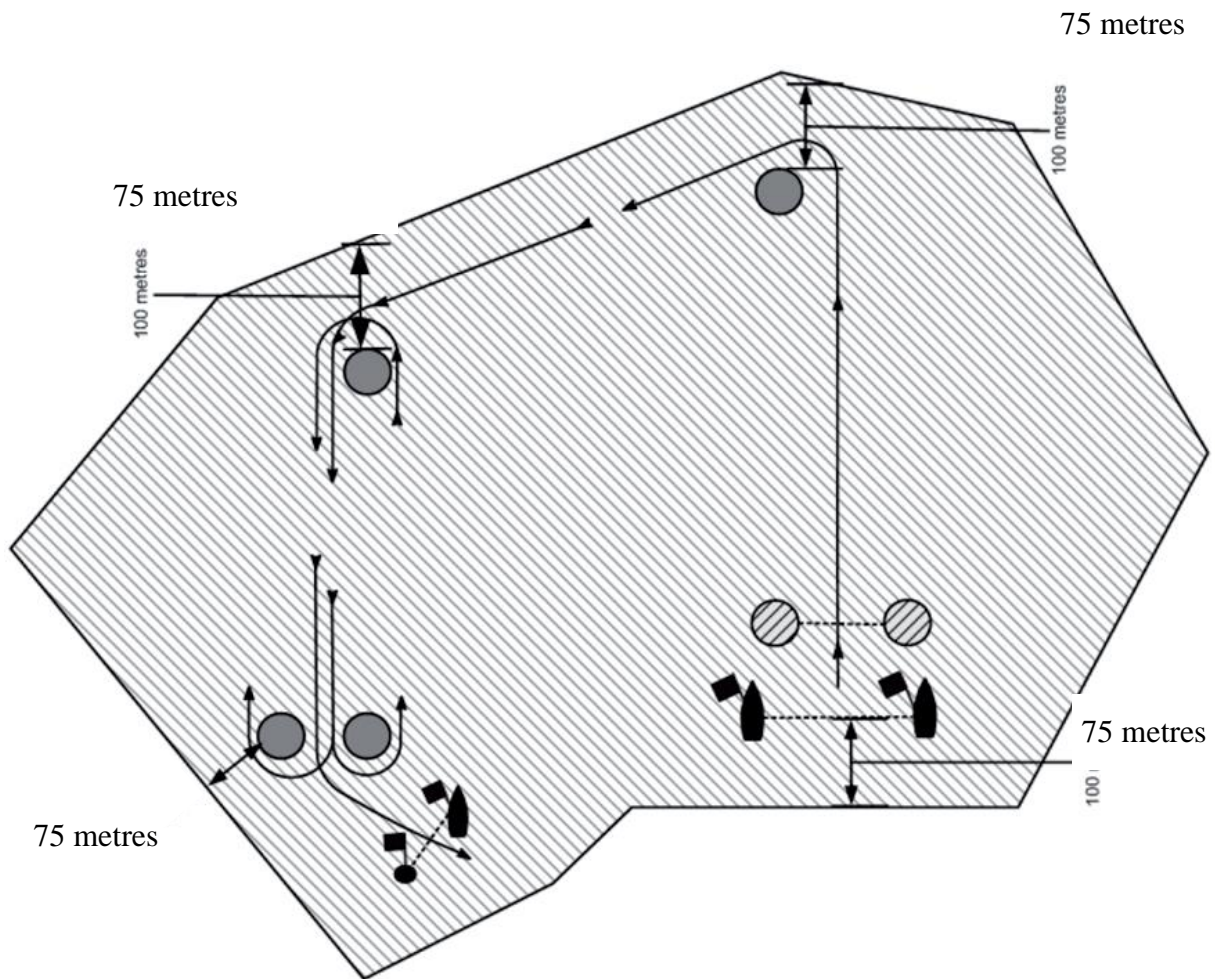
- 24.1. As sailors, we seek to protect and restore our oceans and coastal waters. Boats shall not intentionally put trash in the water. Trash may be placed aboard support and race committee boats. **This changes WCR 55.**


## **25. PRIZES**

- 25.1. Prizes will be given according the Notice of Race.

# APPENDIX -A

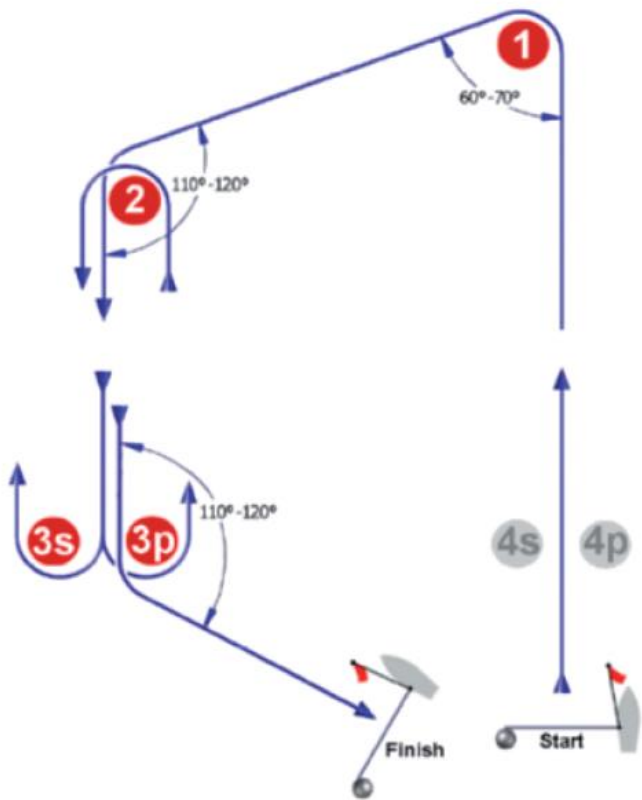
## RESTRICTED AREAS:



 The areas are defined as follows: not closer than 75 metres to any board racing (except a board in distress requiring assistance) or to a mark, layline or rumblineline, and inside the course trapezoid. Until the starting signal coach boats shall be at least 75 metres below the starting line or its extensions.

# APPENDIX -B

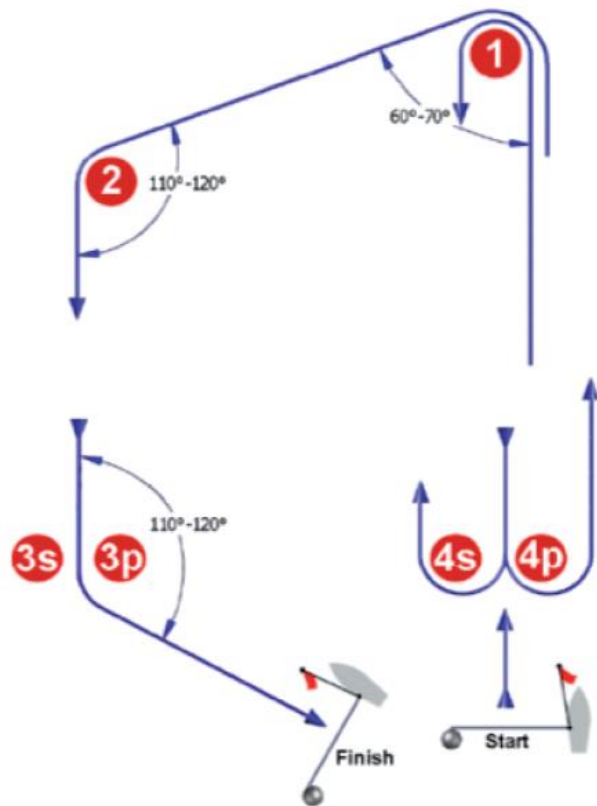
## COURSE: TRAPEZOID



### OUTER LOOP

O2: Start - 1 - 2 - 3s/3p - 2 - 3s/3p - finish

O3: Start - 1 - 2 - 3s/3p - 2 - 3s/3p - 2 - 3s/3p - finish



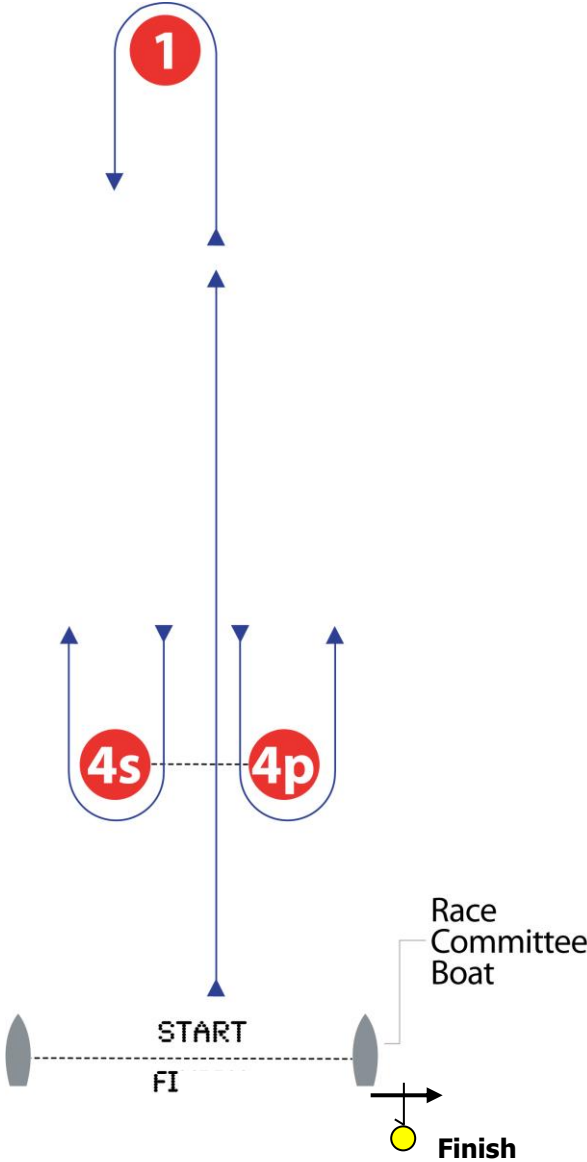
### INNER LOOP

I2: Start - 1 - 4s/4p - 1 - 2 - 3s/3p - finish

I3: Start - 1 - 4s/4p - 1 - 4s/4p - 1 - 2 - 3s/3p - finish



**COURSE: WINDWARD/LEEWARD**



Course Signal	Mark Rounding Order
W2	Start - 1 - 4s/4p - 1 - Finish
W3	Start - 1 - 4s/4p - 1 - 4s/4p - 1 - Finish

**APPENDIX – C**  
**RACING AREAS**

