

# 16<sup>TH</sup> ASIAN SAILING CHAMPIONSHIPS

5<sup>TH</sup> – 14<sup>TH</sup> SEPTEMBER

ASIAN SAILING FEDERATION (ASAF), THE KOREAN SAILING  
FEDERATION (KSAF) AND THE INCHEON ASIAN GAMES ORGANIZING  
COMMITTEE (IAGOC)  
WANGSAN BEACH, INCHEON, KOREA

## NOTICE OF RACE

### 1. RULES

1.1. The 16<sup>th</sup> Asian Sailing Championships will be governed by the Rules as defined in *The Racing Rules of Sailing*.

1.2. No national prescription will apply.

1.3 If there is a conflict between languages the English text will take precedence.

1.4 The Equipment Rules of Sailing and current class rules of competing classes will apply except that class rules on class association membership and championships rules will not apply and for Match Racing , the ALT7000 class rules will not apply.

### 2. ADVERTISING

2.1. Boats may be required to display advertising chosen and supplied by the organizing authority and national letters supplied by the organizing authority.

2.2. While afloat, athletes shall wear bibs, supplied by the organizing authority, displaying their national letters on the outside of all other clothing and equipment.

### 3. ELIGIBILITY

3.1 Following event or classes will compete in the competition:

<b>MEN</b>	<b>WOMEN</b>
1 Person: International Laser Standard	Open-1 Person: International Laser Radial
2 Persons: International 470	2 Persons: International 470
1 Person: RS: X	1 Person: RS: X
1 Person: Mistral	1 Person: Mistral
	2 Person: 49er FX
2 Persons: International 420 (youth)	2 Persons: International 420 (youth)
1 Person: International Optimist (youth)	1 Person: International Optimist (youth)
1 Person: Techno 293 (Youth)	1 Person: Techno 293 (youth)
<b>OPEN</b>	
2 Persons: 29er (Youth Under 19 Yrs)	
2 Persons: Multihull (Hobie 16 Spi)	
Match Racing: ALT 7000 using 4 or 5 Persons with maximum total weight of 340 kg	

3.2. The Members National Authorities (MNA) to which all competitors belong must be fully paid up members of International Sailing Federation (ISAF) & of Asian Sailing Federation (ASAF).

3.3. All Competitors for Optimist Class and Techno 293 Class must be under the age of 16 years on 31<sup>st</sup> December 2013 (born after 31<sup>st</sup> December 1997)

3.4. All Competitors for 420 and 29er Class must be under the Age of 19 years on December 31<sup>st</sup> 2013 (born after 31<sup>st</sup> December 1994)

3.5. Proof of age shall be produced at the time registration.

3.6. Each class will be sailed with a minimum of 5 MNAs entered. The organizing Authority in its absolute discretion may alter this under exceptional circumstances.

#### **4. ENTRY**

4.1. Eligible boats may enter by completing the attached form and sending it by the date prescribed in this instruction.

4.2. For reason of planning (accommodation and boats availability for charter) the Preliminary Entry Form and the Charter Boat Request must be received by KSAF no later than 31<sup>st</sup> May 2013.

4.3. Final Entry Form shall be received by KSAF no later than 30<sup>th</sup> June 2013

4.4. MNA are invited to enter a maximum of two entries per event/class.

#### **5. FEES**

**5.1. Entry fee:** Entry Fee is USD 100 per person for Competitors. Entry Fee will cover opening and closing dinners and the cost of social events during the championships. Other Team leaders/coaches/officials will have to pay for social dinners and events separately.

**5.2. On-Site Registration :** Athletes, coaches and team leaders shall complete an on-site registration form at the Sports Information Desk in the competition venue from 0900 hrs to 1730 hrs between 05 September to 06 September 2013. Teams may send a team manager with all necessary documents to complete the registration. Athletes not registered within this period will not be allowed to participate in the sailing competition.

## 6. SCHEDULE

6.1. The schedule is as follows:

Dates	Time	Remarks
5 Sep	0900–1730 hrs 1000 hrs	Registration & Equipment Inspection Issuing Equipment Optimist, Laser, 29er
6 Sep	0900–1200 1330 hrs 1600 hrs	Registration & Equipment Inspection Practice Race (optional) Opening Ceremony and Competitors meeting
7 Sep	1000 hrs	Racing Day
8 Sep	1000 hrs	Racing Day
9 Sep	1000 hrs	Racing Day
10 Sep	1000 hrs	Racing Day
11 Sep	1000 hrs	Racing Day
12 Sep	1000 hrs	Racing Day
13 Sep	1000 hrs	Racing Day.
14 Sep	1000 hrs 1700 hrs	Racing Day. Closing Ceremony

6.3. The scheduled time of the warning signal for the first race each day is not before 1000 hrs.

6.4. No Warning Signal will be made after 1400 hrs on 14 Sept 2013.

## 7. MEASUREMENT

7.1. Except for the Laser, Optimist, Hobie16 with spinnaker and ALT 7000 classes, each boat where applicable shall produce a valid measurement certificate. There will be equipment inspections during the championships.

## 8. SAILING INSTRUCTIONS

Sailing Instructions will be available after September 4th at the venue.

## 9. VENUE

9.1 Addendum A shows the venue and the location of the regatta.

9.2 Racing Areas will be located in front of the Wangsan beach, Incheon approx 4 kms sailing from the launching area.

## 10. COURSES

Courses will be Trapezoid, plus windward/leeward as described in the Sailing Instructions with optional finishing legs to be advised in sailing Instructions

## 11. PENALTY SYSTEM

11.1. For the multihull class rules 44.1 is changed so that the Two-Turns Penalty is replaced by the One-Turn Penalty.

11.2. An International Jury will be appointed in accordance with RRS Decisions of the jury will be final as provided in rule 70.5.

## **12. SCORING**

### **12.1 Fleet Racing**

12.1.1 The Low Point System of RRS Appendix A will apply. RRS B8 is deleted.

12.1.2 Four races are required to be completed to constitute a series.

12.1.3. When fewer than 5 races have been completed, a boat's series score will be the total of her race scores.

12.1.4 When 5 or more races have been completed, a boat's series score will be the total of her race scores excluding her worst score.

### **12.2 Match Racing**

The scoring system of Appendix C will apply.

## **13. SUPPORT BOATS**

13.1. Support Boat shall be marked with their National Flags or National letters.

## **14. BERTHING**

Boats shall be kept in their assigned places in the boat park or harbour.

## **15. DIVING EQUIPMENT AND PLASTIC POOLS**

Underwater breathing apparatus and plastic pools or their equivalent shall not be used around keelboats between the preparatory signal of the first race and the end of the regatta.

## **16. RADIO COMMUNICATION**

Except in an emergency, a boat shall neither make nor receive radio transmissions, text messages or cellular phone calls not available to all boats while racing.

## **17. PRIZES**

18.1. Medals will be awarded to top 3 positions in each event/class.

18.2 Organising Authority may give additional prizes.

## **18. SAFETY**

18.1. All sailing boats except boards must have a towing rope on board 10 meters in length, or towing facility as per Class rules.

18.2. In addition to IODA Class Rules 4.2(a) and (b), 4.3(a) and (b) each Optimist boat shall have on board a secured paddle with a surface of not less than 0.25 square meters and each competitor shall carry a whistle attached to his/her clothing or body.

18.3. All competitors shall bring their own personal buoyancy which must be capable of being fastened at all time while afloat. Wet / dry suit do not constitute adequate personal buoyancy.

## **19. DISCLAIMER OF LIABILITY**

Competitors participate in the regatta entirely at their own risk. See rule 4, Decision to Race. The organizing authority will not accept any liability for material damage or personal injury or death sustained in conjunction with or prior to, during, or after the

regatta.

## **20. INSURANCE**

Each participating boat shall be insured with valid third-party liability insurance with a minimum coverage of USD300,000 per event or the equivalent. A photocopy of the insurance certificate shall be submitted to the organizing authority at registration.

## **21. RIGHT TO USE NAME AND LIKENESS**

By participating in the 16th Asian Sailing Championships, an athlete automatically grants to the organizing authority and its sponsors the right in perpetuity to make, use and show, from time to time at their discretion, any motion pictures and live, taped or filmed television and other reproductions of the athlete during the period of the competition without compensation.

## **22. CHARTER BOATS**

22.1. Competitors may bring their own boats except ALT 7000. However, limited numbers of boats are available for charter. The countries who have responded to our request of indicating their charter requirement at the preliminary registration will be given preference.

22.2. The charter fees of the following classes for the entire duration will be as under: (Charter fees of each class to be confirmed and advised soon.)

<b>Class</b>	<b>Charter Fees</b>	<b>Damage Deposit</b>
Optimists	TBC	TBC
Laser	TBC	TBC
Laser Radial	TBC	TBC
Match Racing	TBC	TBC
Mistral	TBC	TBC
Hobie 16 with spi	TBC	TBC
29er	TBC	TBC
49er FX	TBC	TBC

22.3 The charter fee may be paid in advance.

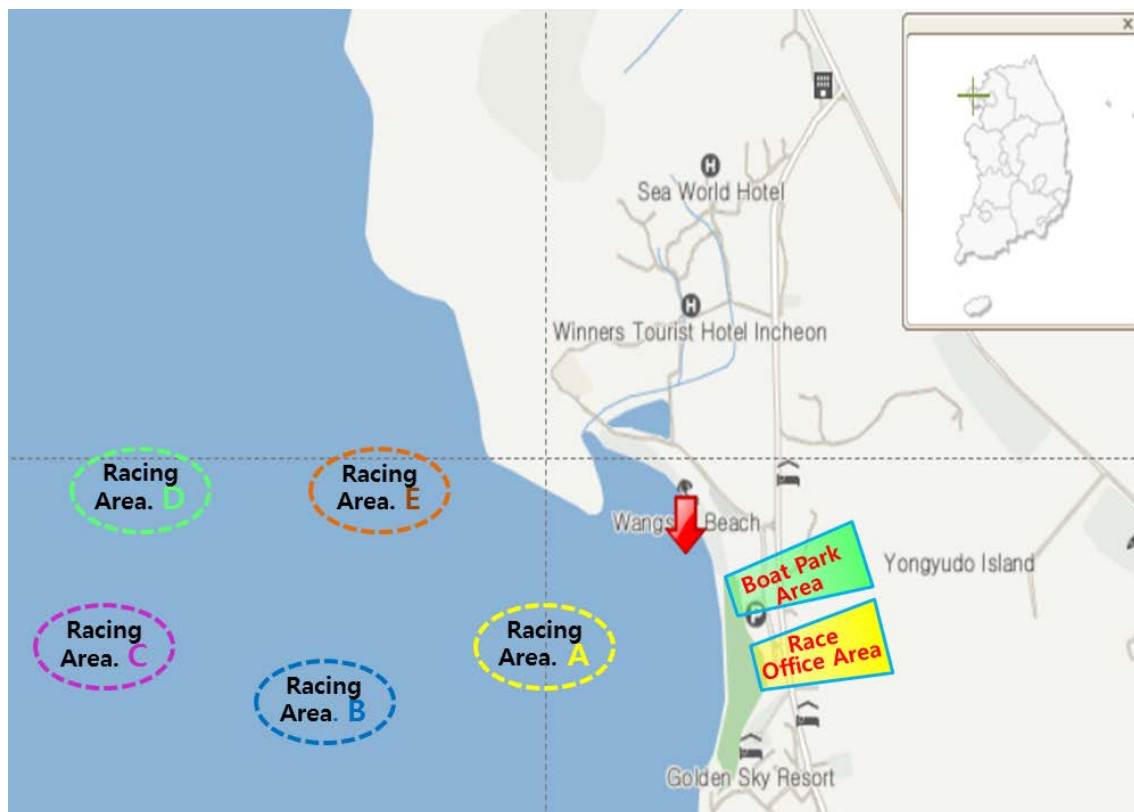
## **23. IMMIGRATION POINT AND EQUIPMENT DECLARATION**

23.1 The Organizing Committee suggests that participants enter Incheon or Gimpo International Airport, or Incheon Port Passenger Terminal.

23.2 Boats or other equipments must be declared at the Incheon or Gimpo International Airport or Incheon Port Passenger Terminal

23.3 Recommended forwarding partner in Korea is advised on request.

## Addendum A: Venue



To be updated

## **Addendum B: Accommodation**

Details of recommended hotels or information are to be advised soon.